



2,918 SF Wallingford Warehouse/Industrial Space for Lease

3513 Stone Way North, Seattle, WA 98103
\$24.00/SF/Year NNN

Property Details

3513 Stone Way North

Property Address:	3513 Stone Way North, Seattle, WA 98103
Price:	\$24/SF/Year
Estimated 2022 NNN:	\$6.85/SF/Year
Building Size:	2,918 SF
Lot Size:	4,609 SF
Zoning:	IC-65 (M)

Features Include:

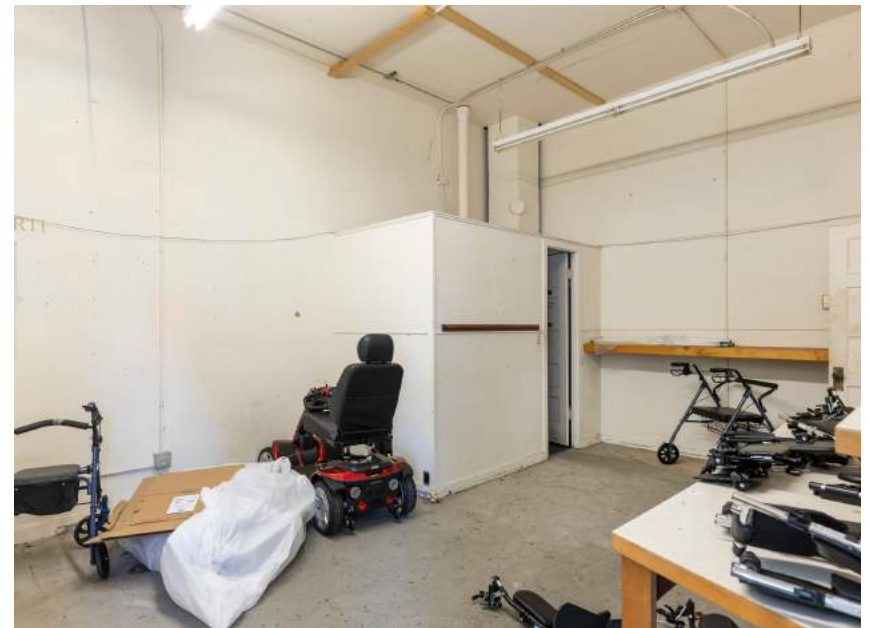
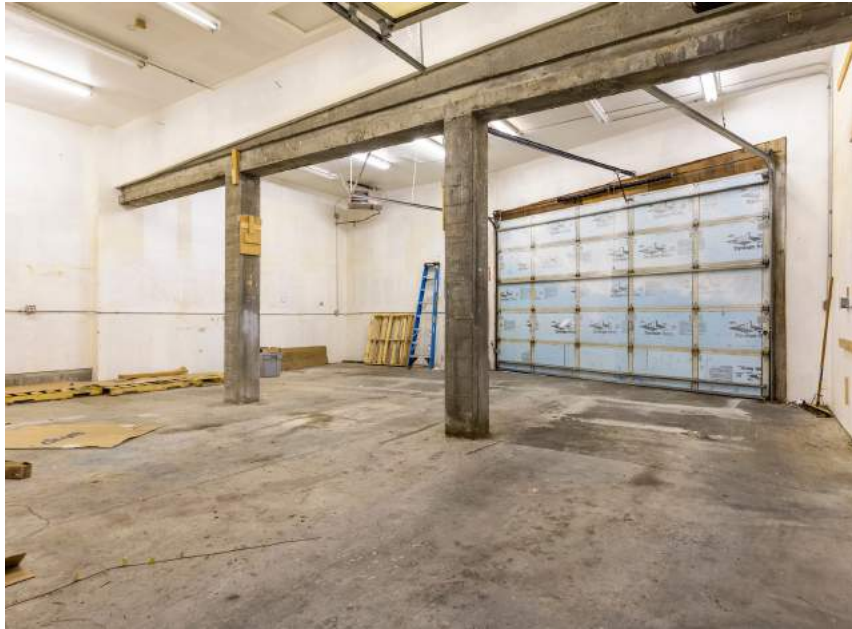
- Two warehouses connected by a covered breezeway totaling 2,918S F
- Open floor plan with 12 ft ceilings
- One restroom
- Concrete floors
- 2 roll-up doors w/ability to drive through from Stone Way N to rear alley
- Excellent Wallingford location with nearly 40' ft of street frontage and a stone's throw from numerous restaurants, shops, the Burke Gilman trail and Lake Union

Adjacent 5,400 SF property at 3509 Stone Way N also available for Lease for \$40.00/SF/Year NNN



Photos

3513 Stone Way North



Exclusively Listed by:

Lauren M Hendricks

Windermere Real Estate Midtown Commercial

2420 2nd Ave

Seattle, WA 98121

(206) 999-9161

LaurenHendricks@Windermere.com

www.CommercialSeattle.com

