



10,214 SF Interbay Warehouse For Lease

2123 West Elmore Street, Seattle, WA 98199

\$1.45/SF/Month NNN

Property Details

Address:	2123 West Elmore Street, Seattle, WA 98199
Price:	\$1.45/SF/Month
Estimated 2022 NNN:	\$0.21/SF/Month
Building Square Feet:	10,214 SF
Lot Size:	12,120 SF
Uncovered Parking:	14
Year Built:	1987
Zoning	IG2 U/65

Features Include:

- 6,630 SF Clear Span Warehouse
- 32' ceilings in warehouse
- 3 Phase Power
- 2 dock high doors
- 4 Private Offices
- 2 Large Open Work Areas
- Fully Sprinklered
- Men and Women's Restrooms with showers
- Large Kitchenette and Break Room
- 14 parking spaces



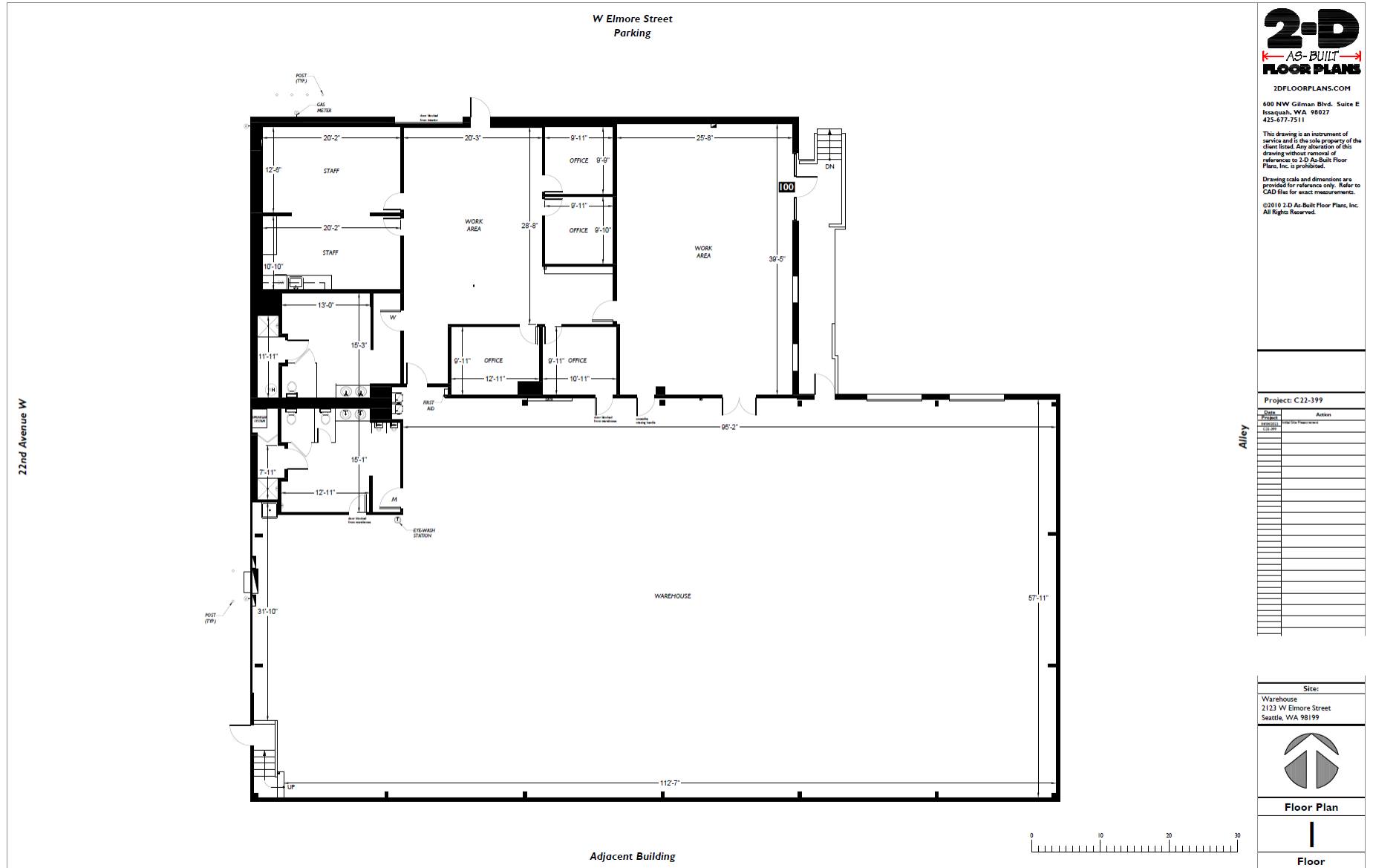
Property Photos



Property Photos



Floor Plan





Lauren Hendricks
(206) 999-9161
LaurenHendricks@Windermere.com
www.CommercialSeattle.com

Windermere Real Estate Midtown/Commercial
2420 2nd Avenue
Seattle, WA 98121



LAUREN
HENDRICKS
COMMERCIAL REALTOR