

Magnolia Village Retail or Office For Lease

1,261 SF

\$30.00/SF NNN

3207 W McGraw St.
Seattle, WA 98199



LAUREN
HENDRICKS
COMMERCIAL REALTOR





Exclusively Listed By

Lauren Hendricks

(206) 999-9161

LaurenHendricks@Windermere.com

www.CommercialSeattle.com

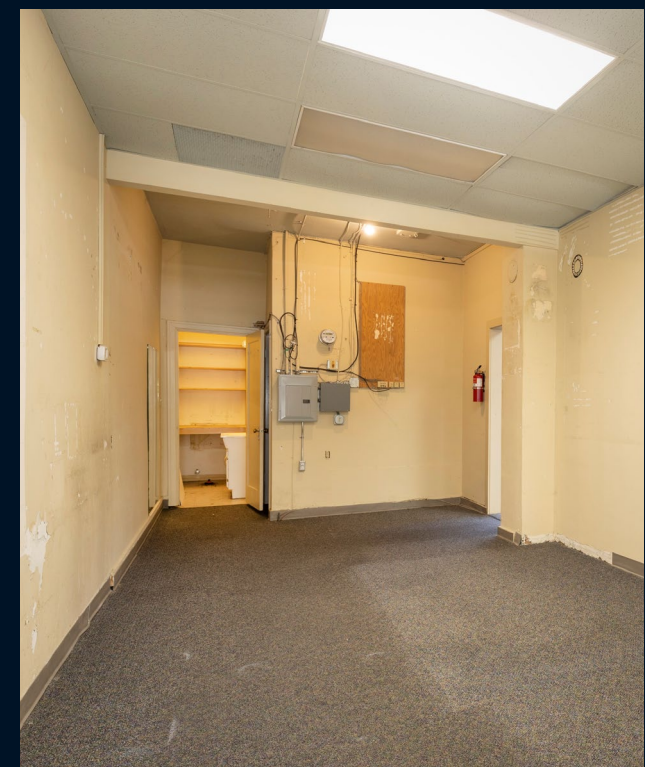
Windermere Real Estate

Midtown Commercial

2420 2nd Avenue

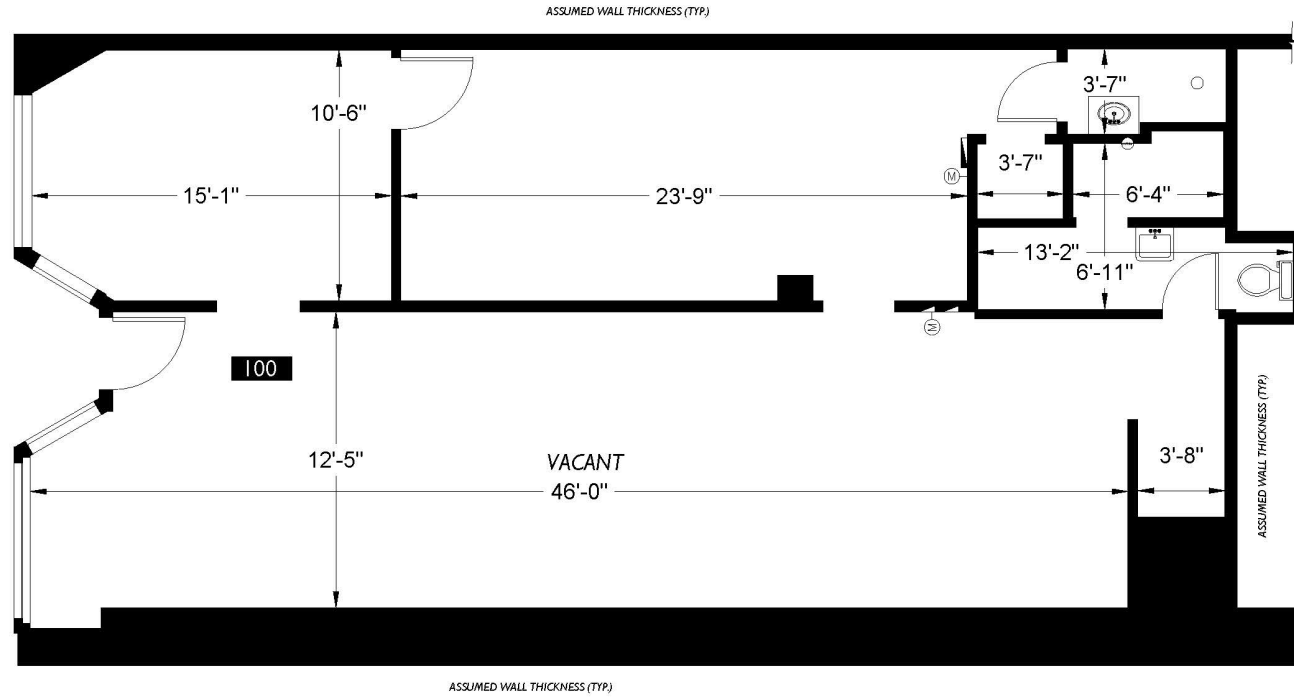
Seattle, WA 98121





Adjacent Suite

W McGraw Street

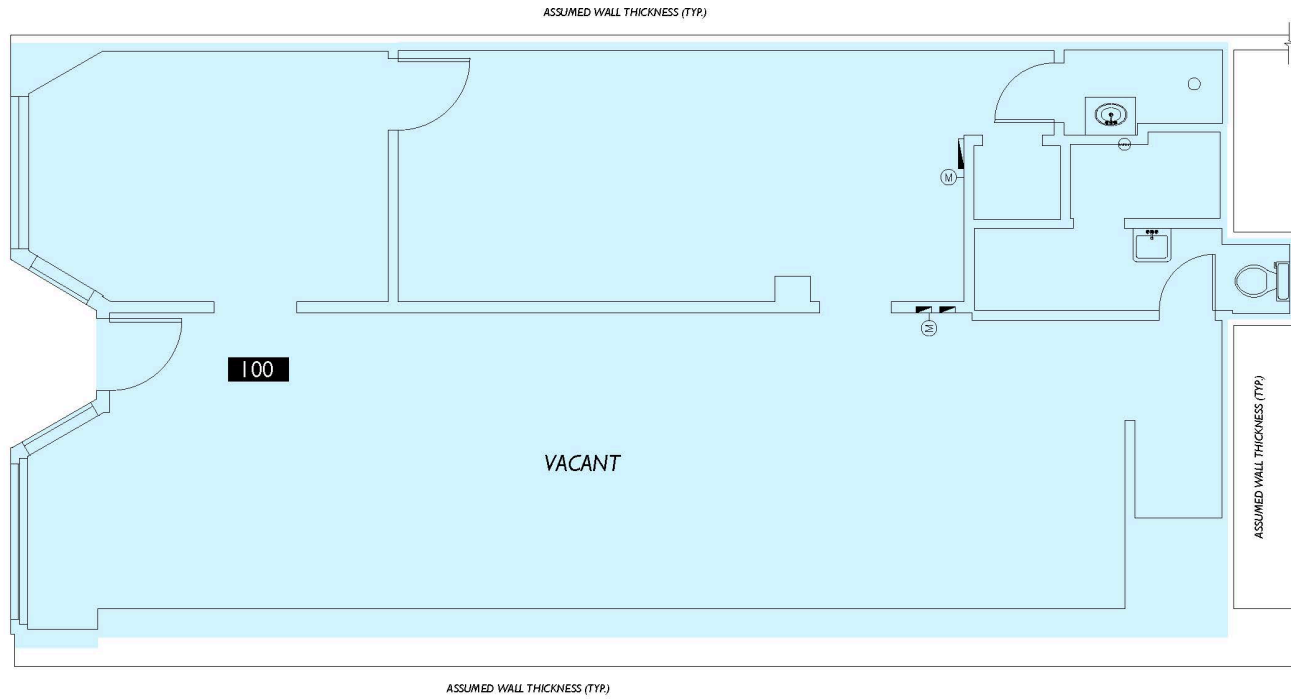


Adjacent Suite

Adjacent Suite

Adjacent Suite

W McGraw Street



Adjacent Suite

Suite #	Occupant
Suite 100	Area 1,260.05

Area Analysis performed in accordance with ANSI/BOMA Z65.5 - 2010 Standard.

Adjacent Suite